

SHAFT ALIGNMENT

GENERATION **XT**

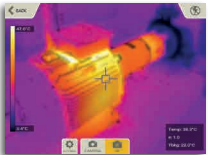
MEASUREMENT INDEPENDENCE

The XT products are cross-platform systems which works with your own display device and our XT11 to perform laser shaft alignment with precision and ease. Rugged design, IP66 and IP67, water and dust proof.

- **Display data on multiple platforms:**
Functionality for iOS, Android and Easy-Laser®.
- **All XT measurement programs in one free app:**
Same intuitive user interface on all platforms and models. Great documentation possibilities: PDF, add photos, email reports.
- **Maximum flexibility:**
Combine measuring units with the display unit of your choice, or use different display units with one set of measuring units. No license hassle!



Optional built-in thermal camera.



EASY-LASER® XT440 SHAFT

The XT440 system has measuring units with line laser for easy setup and measuring process. Like the XT660, this system can also be ordered without the XT11, which makes for a very compact and lightweight carrying case.

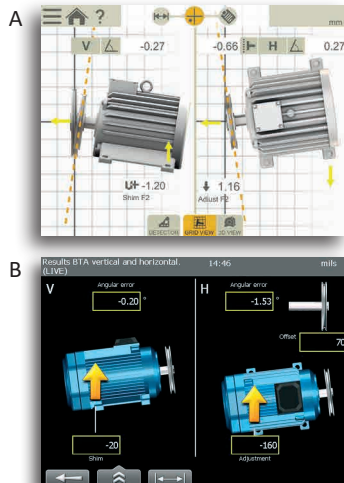
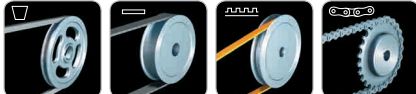
BELT ALIGNMENT



EASY-LASER® BELT TRANSMISSION ALIGNMENT

- XT190 BTA: Digitally displays the parallel and angular misalignment “live”. Use it as an add-on to the XT660/XT440/ E720/E710/E540 systems, or as a separate tool thanks to the built-in display. Or download the free XT Alignment app and use your iOS or Android phone/tablet as display device! Align to specified tolerances, then document the result as PDF.
- A: XT Alignment app B: E-series system
- D90 BTA: Laser tool with targets for accurate visual belt alignment.

For almost all belt drives:
V-belt, timing belt, flat belt and chain drives.



EASY-LASER®

STRAIGHTFORWARD BY ALL MEASURES™

STRAIGHTFORWARD BY ALL MEASURES

Easy-Laser® is one of the world’s leading manufacturers and suppliers of laser measurement systems for all types of industry. We provide extreme accuracy and precision. But that’s not what sets us apart. Today, when virtually anyone with a decent laser can do “straight”, to get ahead, you need to be a bit more forward-thinking.

Because, in the long run, what really counts is neither the absolute straightness of an individual component nor the precise alignment of shafts. It’s what these measures add up to: Increased productivity and the saving of resources. Those are the things we ultimately deliver. And from that perspective our most important task is to help you make the road leading there as free from bumps and bends as possible.

Regardless of whether you’re a service technician, a purchaser or the CFO of a multinational industrial group, you’ll find Easy-Laser® truly easy to deal with. Or as we like to put it – straightforward by all measures.

MORE INFORMATION

Note: on the photos of each system only the main parts are shown. Download the system specific brochure with complete information from www.easylaser.com!

E720

E980

E975

E970

E960

E950

E940

E930

E920

E915*

E910*

E710

E540

E420

SOFT FOOT

HORIZONTAL

VERTICAL

VALUES (DIGITAL DIALS)

MACHINE TRAIN**

BELT ALIGNMENT*

VIBRATION*

CARDAN/OFFSET MOUNTED*

PARALLELISM*

OFFSET AND ANGLE

FLANGE FLATNESS

SECTIONAL FLANGE FLATNESS

FLANGE PARALLELISM*

SQUARENESS

ROUNDNESS/OVALITY*

STRAIGHTNESS 2-POINT

STRAIGHTNESS 3-POINT*

STRAIGHTNESS 4-POINT*

STRAIGHTNESS MULTIPPOINT*

STRAIGHTNESS

FLATNESS

TWIST

Only includes Flange programs and Values. ** Limited to 3 machines for E540. *Accessory required.

XT660

XT440

SOFT FOOT

HORIZONTAL

VERTICAL

VALUES (DIGITAL DIALS)

BELT ALIGNMENT *

TWIST #

Measurement methods:

9-12-3

EASYTURN

MULTIPOINT

CONTINUOUS SWEEP

General features:

1 FREE APP

EMAIL REPORTS

VERY LONG OPERATING TIMES

Download on the App Store

GET IT ON Google Play

Available 2018. *Accessory required.

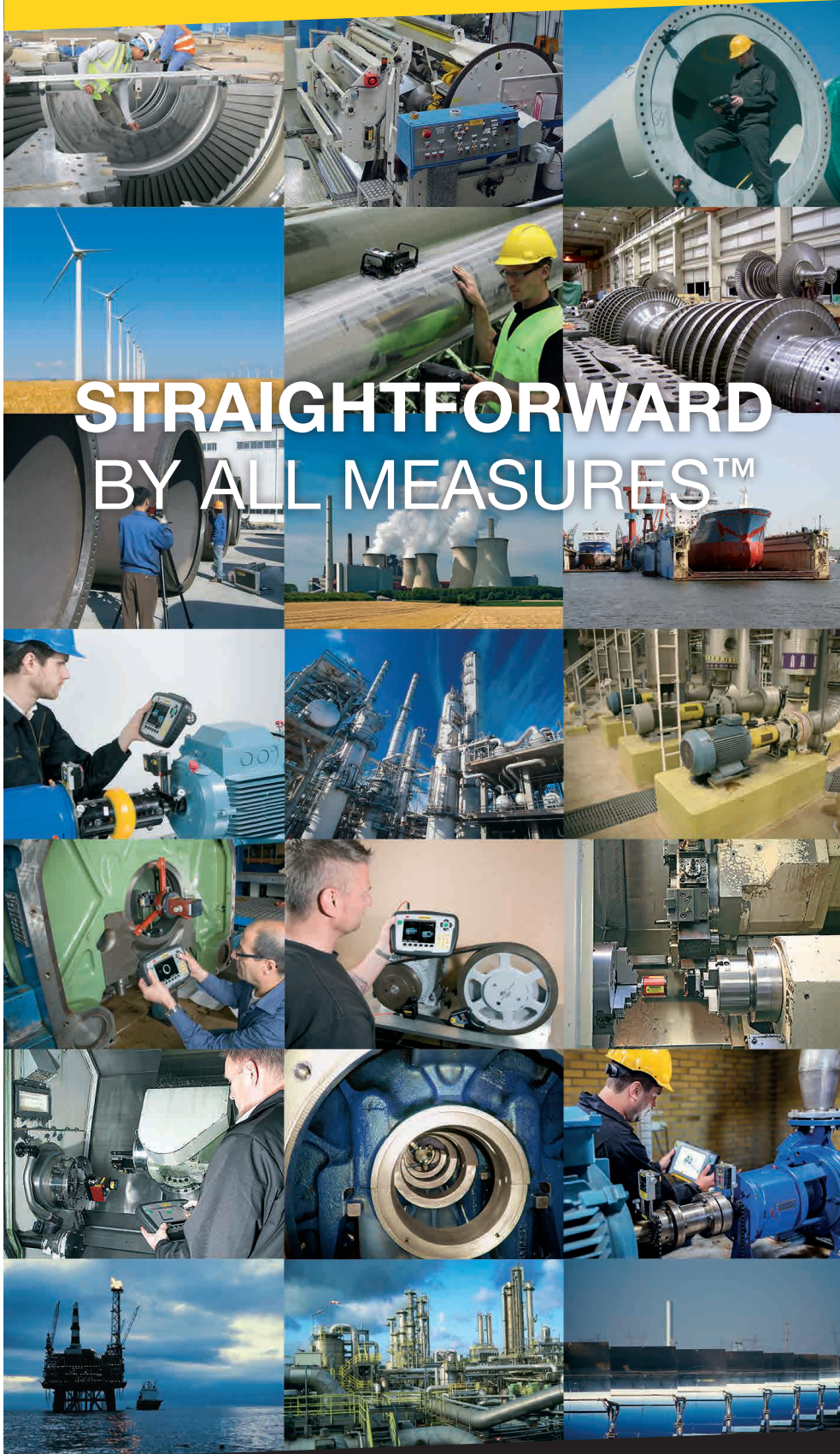
Authorized distributor



Easy-Laser® is manufactured by Easy-Laser AB, Alfagatan 6, SE-431 49 Mölndal, Sweden
Tel +46 31 708 63 00, Fax +46 31 708 63 50, e-mail: info@easylaser.com, www.easylaser.com
© 2017 Easy-Laser AB. We reserve the right to make changes without prior notification.
Easy-Laser® is a registered trademark of Easy-Laser AB. Android, Google Play, and the Google Play logo are trademarks of Google Inc. Apple, the Apple logo, iPhone, and iPod touch are trademarks of Apple Inc., registered in the U.S. and other countries. App Store is a service mark of Apple Inc.
These products comply with: EN60825-1, 21 CFR 1040.10 and 1040.11.
Contains FCC ID: Q00BGM111, IC: 5123A-BGM111 and FCC ID: PPD-QCA6234, IC: 4104A-QCA6234.
05-0619 Rev9

PRODUCT OVERVIEW

MEASUREMENT & ALIGNMENT SYSTEMS



STRAIGHTFORWARD BY ALL MEASURES™

EASY-LASER®
www.easylaser.com

SHAFT ALIGNMENT

E-SERIES

EFFICIENT!

The Easy-Laser® E-series shaft alignment systems are very easy to use. Large 5.7” colour display, guiding software and wireless communication are some of the features.



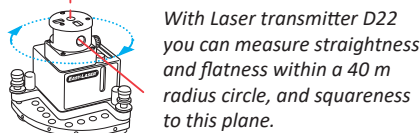
EASY-LASER® E720 SHAFT

With Easy-Laser® E720 we include our very versatile laser transmitter D22, and all geometric apps. With this measurement system you can perform almost any kind of machine set-up and quality check:

- Measure the base twist and flatness
- Measure straightness of pipes and shafts
- Measure flatness of parting surfaces
- Measure vibration level*
- Measure bearing play
- Check soft foot
- Measure the machine position
- Align the machine
- Document the results



*Accessory E285 VIB required



EASY-LASER® E710 SHAFT

Easy-Laser® E710 is the Total Alignment Solution for your rotating machinery! This measurement system handles all stages of machine set-up:

- Measure the base twist
- Measure vibration level*
- Measure bearing play
- Check soft foot
- Measure the machine position
- Align the machine
- Document the results



*Accessory E285 VIB required

EASY-LASER® E540 SHAFT

Easy-Laser® E540 provides the ideal balance between performance and price allowing you to create the best conditions to operate your machinery economically and problem-free. With built-in wireless units.



EASY-LASER® E420 SHAFT

Easy-Laser® E420 redefines the entry level for shaft alignment systems! Built-in wireless units, large 5.7” colour display and measurement functions like much more advanced systems.



FLANGE FLATNESS



MOBILE MEASUREMENT

The Easy-Laser® Flange flatness systems are really easy to use! You get a True3D graph result and all best fit calculations available directly on site.

EASY-LASER® E915/E910 FLANGE

For flange flatness measurement. See the result as a true 3D image in the display unit directly after measuring. Evaluate the result easily with different calculation settings directly on site without having to stop to go to a PC with separate analysis programs. This makes production much more efficient.

Two Flange systems are available:

Easy-Laser® E915 with Spin Laser.

Easy-Laser® E910 with Swivel Laser.



GEOMETRICS IN GENERAL

EASY-LASER® E920 GEOMETRIC

This versatile system can be used to carry out all the most common geometric measurements; straightness, flatness, squareness, plumb and level. Measurement is quick and precise. Displayed resolution is 0.001 mm [0.05 mils]. The system can provide full documentation, with direct generation of PDF reports, and database programs for PC. The laser transmitter is our well known big seller, the D22 with levelling table, strong magnetic feet, and a range of up to 40 m.



EXTRUDERS

EASY-LASER® E930 EXTRUDER

The Extruder system E930 is designed to measure straightness and pointing direction, primarily on extruder pipes. Another application can be hydraulic pipes for example. The well-thought-out design of the system ensures that the measurement procedure is quick and accurate. Diameters down to 50 mm [1.97"] can be measured. Working range is up to 40 m [130']. The programs guide you through the measuring procedure, which speeds up the work.



MACHINE TOOLS



TOTAL CONTROL

All measurements with the E940 system will compare results with ISO10791-1 or 10791-2, the standards used for machine tool measurement.

EASY-LASER® E940 MACHINE TOOL

Easy-Laser® E940 Machine tool system is a complete measurement system for measuring and aligning machine tools. The most important thing to check is the geometry of the machine; straightness, spindle direction, flatness and squareness, because not even a precisely calibrated linear motion can compensate for a crooked movement or uneven surface. Compared to conventional methods, such as dial gauges, mandrels and stones, work can be carried out much more accurate and quickly with the use of a laser measurement system. And do not forget, the results can be documented.

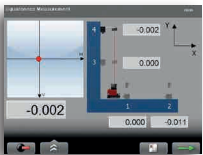
- Light and handy equipment
- Possible to measure and align over long distances
- Document the result as PDF and to PC



Spindle direction



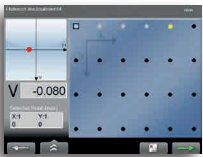
Spindle direction result



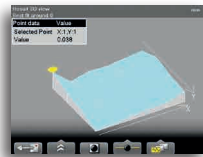
Squareness



Squareness result



Flatness



Flatness result graph



Makes it possible to display a resolution of 0.0001 mm [0.000005"/0.005 mils].

LEVEL MEASUREMENT

EASY-LASER® E290 DIGITAL LEVEL

Digital levels are extremely useful tools for setting-up and aligning most types of machine, for example, levelling machine tables, rolls, bases, etc. Other areas of use include checking straightness, flatness and parallelism. Easy-Laser® E290 now also offers the possibility of documenting the work, by wirelessly connecting to your Easy-Laser® alignment system. E290 is the perfect addition to laser based alignment systems and is an investment that can be recouped quickly thanks to the broad areas of use.

Use your iPhone, iPod or iPad as display!

With our free app Precision Level you can follow the alignment from the place where you adjust the machine, and document your measurement.



BORE ALIGNMENT



EASY-LASER® E950 BORE ALIGNMENT

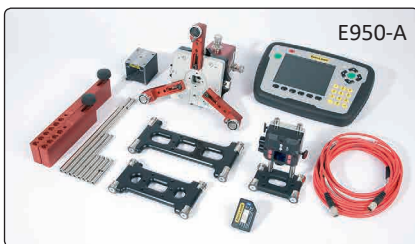
Easy-Laser® E950 makes measuring and aligning bearings and bearing journals easier thanks to wireless detector and versatile brackets.

- Measures both full bores and half bores
- Multi-point measurement
- Bore ovality measurement
- Calculate waviness (short and long) and best-fit

Available configurations:

Easy-Laser® E950-A and E950-C for Diesel engines, Compressors, Gearboxes etc.

Easy-Laser® E950-B and E950-D for Propeller shaft drive lines with sterntube.



TURBINE ALIGNMENT



PRECISION AND RELIABILITY!

Straightness measurement with the Easy-Laser® E960 Turbine system is quick and reliable, and made with the high precision you need.

EASY-LASER® E960 TURBINE

Easy-Laser® E960 Turbine alignment systems make the measurement and adjustment work of diaphragms and bearings easier thanks to the wireless detector unit and measurement programs that guide you through the measurement process.

- Measures both full bores and half bores
- Multi-point measurement
- Bore ovality measurement
- Calculate waviness (short and long) and best-fit

Available configurations:

Easy-Laser® E960-A: Suitable for gas turbines and smaller steam turbines.

Easy-Laser® E960-B: Suitable for large turbines.



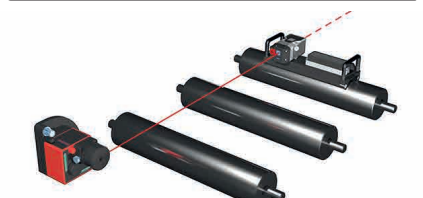
ROLL ALIGNMENT



EASY-LASER® E975 ROLL ALIGNMENT

Designed mainly for roll alignment. The system is well suited when just one or two rolls are to be replaced or adjusted at the same time. The E975 use a new revolutionary detector, and a digital precision level. Quick to set up on the machine!

- Keep the maintenance and service work in-house
- Even short stoppages can be utilized
- Easier to use than traditional methods



EASY-LASER® E970 PARALLELISM

For parallelism measurement of rolls and other objects in numerous applications. The E970 is especially suitable when many objects are to be measured and aligned, and when the distances are long (40+40 m). Also measures level, straightness and flatness on wire sections (suction boxes), flatness on bases and straightness on rolls.

- For parallelism measurement of most kind of objects
- Versatile system – also for flatness and level



SAWMILLS

EASY-LASER® E980 SAWMILL

The Easy-Laser® E980 Sawmill system will help you increase efficiency and save money in your sawmill. The system measures straightness, flatness and squareness. Saw blades, band wheels, reducers and steerings are aligned and positioned. It can be used equally well for circular saws and band saws.

