

Getting to know our products?

Easy.



EASY-LASER®

www.easylaser.com

Generation XT

— an age of independence



All XT programs in one free app

All XT measurement programs in one straightforward application available for free. Functionality for iOS, Android and Easy-Laser® XT display units.

No lock-ins

Buy with or without the user-friendly, shockproof and waterproof Easy-Laser® XT11 display unit.

Maximum flexibility and ease of use!

Purchase multiple systems with various capabilities, train once! The training costs are reduced significantly since the app interface and basic functionality is identical for all systems.

Long operating times

The long operating times of up to 16 hours for the display unit and 24 hours for the measuring units mean even the toughest jobs will be finished on time with no interruptions.



XT Shaft alignment

Easy-Laser® XT770 Shaft

For solving measurement and alignment problems of all kinds on most machine types.

- Measuring units with 2 axis dot laser
- 360Live feature allows for adjustment with units positioned at any angle around the shaft
- Check machine movement over time with the EasyTrend program*
- Continuous Sweep and Multipoint measurements
- Uncoupled sweep mode for uncoupled shafts
- Programs for Horizontal and Vertical/Flange mounted machines
- Programs for Machine trains (unlimited) and Cardan/Offset* mounted machines
- Program for Twist/Flatness measurement of the base
- 20 m [66'] measurement distance



Easy-Laser® XT770 Shaft/GEO

This version of the XT770 system includes the GEO Kit with laser transmitter XT20. Please read more at XT Geometric Kit section.

Easy-Laser® XT660 Shaft

With the XT660 you can deal with all the important steps of machine setup and maintenance.

- Measuring units with 1 axis dot laser
- Continuous Sweep and Multipoint measurements
- Uncoupled sweep mode for uncoupled shafts
- Programs for Horizontal and Vertical/Flange mounted machines
- Programs for Machine trains (3 machines) and Cardan/Offset* mounted machines
- Program for Twist/Flatness measurement of the base
- 20 m [66'] measurement distance



Easy-Laser® XT550 Shaft

The intrinsically safe, Ex/ATEX approved XT550 system has the same basic functionality as XT660. The difference is that it comes with a different display unit (ecom Tab-Ex®) for use in potentially explosive areas, and can handle unlimited machine trains, plus it has the adjustment guide feature.

Measuring units are approved according to:

- II 2 G, Ex ib op is IIC T4 Gb, $-10^{\circ}\text{C} \leq T_a \leq +50^{\circ}\text{C}$
- Presafe 17 ATEX 10552X, IECEx PRE 17.0049X



Easy-Laser® XT440 Shaft

With functions for most maintenance needs.

- Measuring units with 1 axis line laser
- EasyTurn and 9–12–3 measurements
- Programs for Horizontal and Vertical/Flange mounted machines
- 10 m [33'] measurement distance

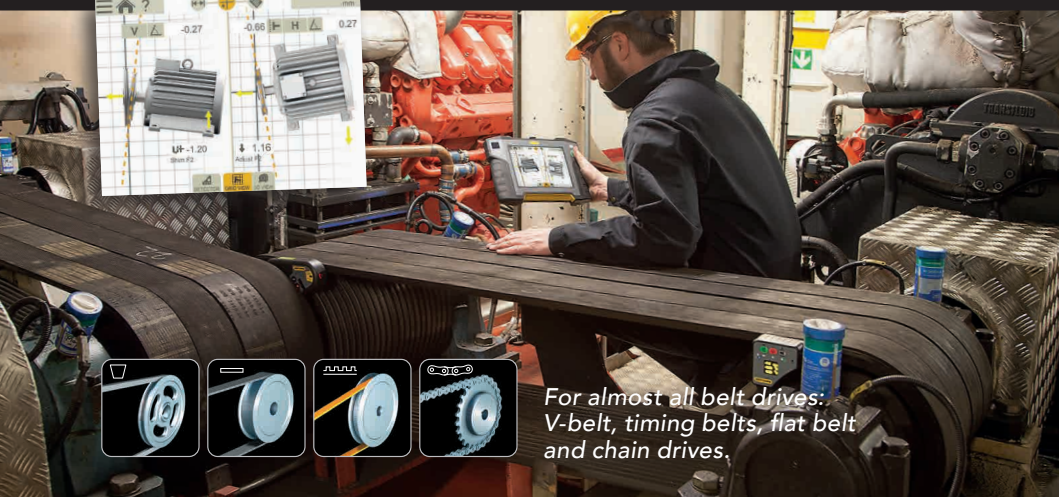
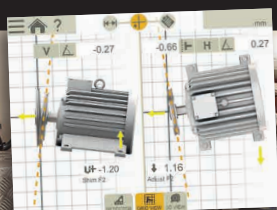


*Accessory required

XT Belt alignment

Easy-Laser® XT190 Belt Transmission Alignment

Digitally displays the parallel and angular misalignment "live". Use it as an add-on to the XT770/XT660/XT440/E710 systems, or as a separate tool thanks to the built-in display. Or download the free XT Alignment app and use your iOS or Android phone/tablet as display device! Align to specified tolerances, then document the result as PDF.



For almost all belt drives:
V-belt, timing belts, flat belt
and chain drives.

XT Vibration measurement

Easy-Laser® XT280 VIB

Easy-to-use vibration analyzer that quickly diagnoses vibration level, unbalance, misalignment and looseness.

The direct readout of 1x, 2x, 3x RPM, total level as well as bearing condition provides necessary information during installation and alignment.

The XT280 connects to the XT Alignment app, making it possible to document the result as PDF, with photo and comments for each measurement point.



XT Thermal camera

Easy-Laser® XT11 + Thermal camera

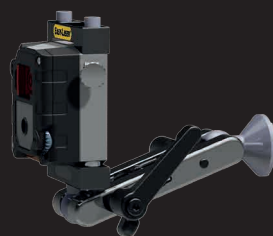
The Easy-Laser XT11 Display unit has the option to add a thermal imaging (IR) camera along with the standard 13 MP digital camera. Shoot a thermal image before and after alignment and include with the documentation!



XT Dynamic measurements

Easy-Laser® XT DM-brackets

With the EasyTrend program for XT770 you can keep track of machine movement over time. For example you can check for thermal expansion and pipe strain issues. Requires optional DM-brackets.



XT Digital Level

Easy-Laser® XT290 Digital Level

Digital levels are extremely useful tools for setting-up and aligning most types of machines. Use it for bases, rolls, etc. It is the must-have add-on to the XT770/XT660/XT440 systems. Download the free XT Alignment app and use your iOS or Android phone/tablet as display, and/or the XT11. Document the result as PDF with photos. You can also use it as a separate tool thanks to the built-in display.



XT Geometric Kit

Easy-Laser® XT Geometric Kit

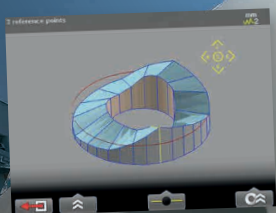
With this kit added to your XT770, using the Values, Straightness or Basic Flatness programs, you will be able to take flatness and straightness measurements with the highest reliability and precision. The kit includes the laser transmitter XT20 (pictured) plus geo brackets. For more information, please ask your sales representative.



Generation XT features

								XT770	
XT440				XT550 / XT660					
Horizontal	Vertical	Soft foot	Values (Digital dials)	Cardan/Offset mounted *	3 machine train	Machine train **	EasyTrend *		
Multi-lingual	Wide live adjustment	9-12-3	EasyTurn	Multipoint	Uncoupled sweep	360° live adjustment	Adjustment guide **		
Built-in help	Belt alignment *	Vibration *	Level *	Continuous sweep	Twist	Basic flatness *	Straightness *		

*Accessory required **Also with XT550.



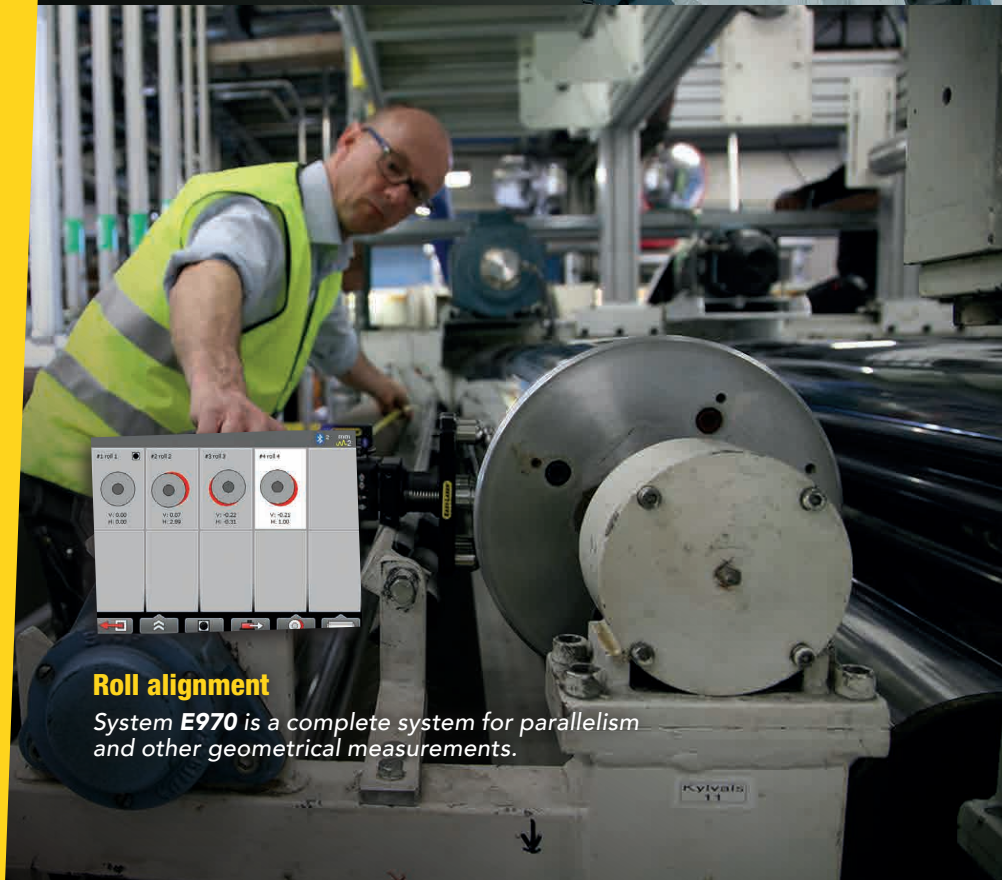
Mobile measurement

The Easy-Laser **E915/E910** Flange flatness systems are really easy to use! You get a True3D graph result and all best fit calculations available directly on site.



Roll alignment

System **E970** is a complete system for parallelism and other geometrical measurements.



Easy-Laser geometrical measurement systems

The laser line works as an absolutely straight and weightless ruler for up to 40 metres (depending on system configuration). Our laser systems provide more possibilities for precision alignment and checking the geometry of machinery, and is also much easier to use, than traditional technology.



Geometric measurement

Easy-Laser® E915/E910 Flange

For flange flatness measurement. See the result as a true 3D image in the display unit directly after measuring. Evaluate the result easily with different calculation settings directly on site without having to stop to go to a PC with separate analysis programs. This makes production much more efficient.



Two Flange systems are available:

- Easy-Laser E915 with Spin Laser.
- Easy-Laser E910 with Swivel Laser.

Unique measurement method for flanges

Tower sections with large diameters are heavy, resulting in flange deformation when manufactured. With the patented flange section measurement program the flatness is measured in four sections which are mathematically merged into a full circle. This solves the flange deformation problem, and makes it possible to perform the complete measurement on ground. No climbing on ladders or skylift is required, making it much safer for the operators.



With the section measurement program, the measurement result is unaffected by the tower deformation.

Easy-Laser® E920 Geometric

This versatile system can be used to carry out all the most common geometric measurements; straightness, flatness, squareness, plumb and level. Measurement is quick and precise. Displayed resolution is 0.001 mm [0.05 mils]. The system can provide full documentation, with direct generation of PDF reports, and database programs for PC. The laser transmitter is our well known big seller, the D22 with levelling table, strong magnetic feet, and a range of up to 40 m.



Easy-Laser® E930 Extruder

The Extruder system E930 is designed to measure straightness and pointing direction, primarily on extruder gearbox and barrel. Another application can be hydraulic pipes for example. The well-thought-out design of the system ensures that the measurement procedure is quick and accurate. Diameters down to 50 mm [1.97"] can be measured. The programs guide you through the measuring procedure, which speeds up the work.



Easy-Laser® E290 Digital Level

Digital levels are extremely useful tools for setting-up and aligning most types of machines, for example, levelling machine tables, rolls, bases, etc. Other areas of use include checking straightness, flatness and parallelism. Easy-Laser E290 also offers the possibility of documenting the work, by wirelessly connecting to your Easy-Laser® E-series alignment system.





Bore measurement

System E950 is used for measuring straightness of bearing journal centre lines in for example diesel engines, gearboxes, compressors and propeller drive lines. Can also be used for roundness measurement.

Easy-Laser® E950 Bore Alignment

Easy-Laser E950 makes measuring and aligning bearings and bearing journals easier thanks to a wireless detector and versatile brackets.

- ✓ Measures both full bores and half bores
- ✓ Multipoint measurement
- ✓ Bore ovality measurement
- ✓ Calculate waviness (short and long) and best-fit

Available configurations:

- Easy-Laser E950-A and E950-C for diesel engines, compressors, gearboxes etc.
- Easy-Laser E950-B and E950-D for propeller shaft drive lines with sterntube.



Easy-Laser® E960 Turbine

Easy-Laser E960 Turbine alignment systems make the measurement and adjustment work of diaphragms and bearings easier thanks to the wireless detector unit and measurement programs that guide you through the measurement process.

- ✓ Measures both full bores and half bores
- ✓ Multipoint measurement
- ✓ Bore ovality measurement
- ✓ Calculate waviness (short and long) and best-fit

Available configurations:

- Easy-Laser E960-A: Suitable for gas turbines and smaller steam turbines.
- Easy-Laser E960-B: Suitable for large turbines.



Easy-Laser® E970 Parallelism

For parallelism measurement of rolls and other objects in numerous applications. The E970 is especially suitable when many objects are to be measured and aligned, and when the distances are long (40+40 m). Also measures level, straightness and flatness on wire sections (suction boxes), flatness on bases and straightness on rolls.

- ✓ For parallelism measurement of most kind of objects
- ✓ Versatile system – also for flatness, straightness and level



Easy-Laser® E980 Sawmill

The Easy-Laser E980 Sawmill system will help you increase efficiency and save money in your sawmill. The system measures straightness, flatness and squareness. Saw blades, band wheels, reducers and steerings are aligned and positioned. It can be used equally well for circular saws and band saws.



Easy-Laser® XT980 Sawmill

This is the Generation XT system for sawmill alignment jobs. Get it with our rugged XT11 display unit, or use a tablet of your choice.



Shaft alignment *E-series*

Easy-Laser® E710 Shaft

Easy-Laser E710 handles all stages of machine set-up and alignment:

- ✓ Measure the base twist
- ✓ Correct soft foot
- ✓ Measure misalignment
- ✓ Align the machine
- ✓ Document the results
- ✓ Measure positional change (Thermal Growth)
- ✓ Optional belt alignment
- ✓ Upgradable to handle additional measurement applications

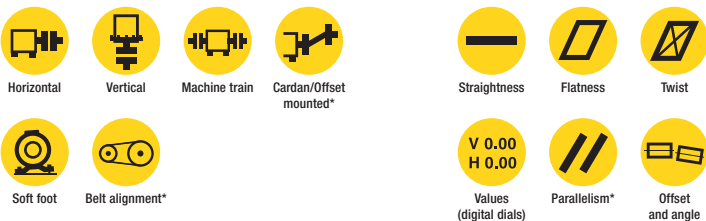


Programs *E-series*

E980 / E970 / E960 / E950 / E930 / E920 / E915# / E910#



E710



#Only includes Flange programs and Values. *Accessory required.

It's easy!

The Easy-Laser® XT Alignment app gives you the freedom to work with the display unit that suits you and the job best*. Download the app for free and start measuring!

*Please see our web site for compatible models.



On our web site you can find Easy-Laser® sales representatives and Service Centers all over the world. There you can also learn more about each specific measurement system, and download the detailed product brochures:

www.easylaser.com

Authorized distributor



Easy-Laser® is manufactured by Easy-Laser AB, Alfagatan 6, SE-431 49 Mölndal, Sweden
Tel +46 31 708 63 00, Fax +46 31 708 63 50, e-mail: info@easylaser.com, www.easylaser.com
© 2022 Easy-Laser AB. We reserve the right to make changes without prior notification.
Easy-Laser® is a registered trademark of Easy-Laser AB. Android, Google Play, and the Google Play logo are trademarks of Google Inc. Apple, the Apple logo, iPhone, and iPod touch are trademarks of Apple Inc., registered in the U.S. and other countries. App Store is a service mark of Apple Inc.
05-0619 Rev17